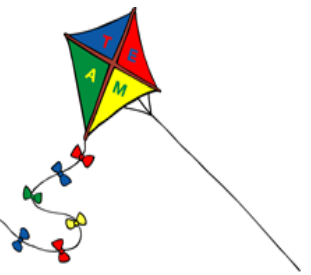


TWYFORD ST MARY'S C of E PRIMARY SCHOOL



TRAFFIC MANAGEMENT PLAN

The aim of this plan is to minimize, as far as possible, the health and safety risk to all users (staff, pupils, parents and visitors) of the school site.

Parking

Parking on the school premises is for school staff only.

Staff should not park their cars in the top playground. Currently only one member of staff has permission to leave her car on the top playground.

The staff car parking area is by the side of the school -

- There is insufficient lighting in this area making it unsafe for staff leaving after dark.
- Adequate lighting is needed.
- There are no designated disabled parking spaces on the school premises.

Staff

If staff are entering or leaving the staff car parking area during the school day when children are playing the adults on playground duty must be informed before the vehicle begins moving. The supervising adults must ensure the children are kept well away from the car and close the gates securely as soon as the vehicle has left the playground.

- Convex mirror needed to help staff when leaving designated parking area.

Pupils

Pupils should be made aware of traffic and road safety issues.

Pupils should not open or close gates for vehicles entering/leaving the playground.

Cycling/scooting is not permitted on the school site except during cycling tuition sessions.

Pupils cycling to school should dismount at the school gate and bicycles/scooters should be walked to the covered cycle shelter in the top playground.

Contractors

Contractors, including Grounds Maintenance staff, must report to the school office before accessing the school site to ensure safety measures are in place for the duration of their visit to the site.

Parents/Carers

Parents/carers must not drop off their children outside the school gates.

They should not park in the roads immediately surrounding the school (School Road, Hill Rise or on the corner of School Road/Queen Street)

Cars should be parked safely and legally in the village and children walked the remaining distance to school.

No weekend or evening parking is allowed in the school playground. An exception will be made on the day of the school fete when parent helpers will be allowed to park their cars near Ballard Close for unloading purposes.

A risk assessment form must be completed for this occasion.

Pedestrians

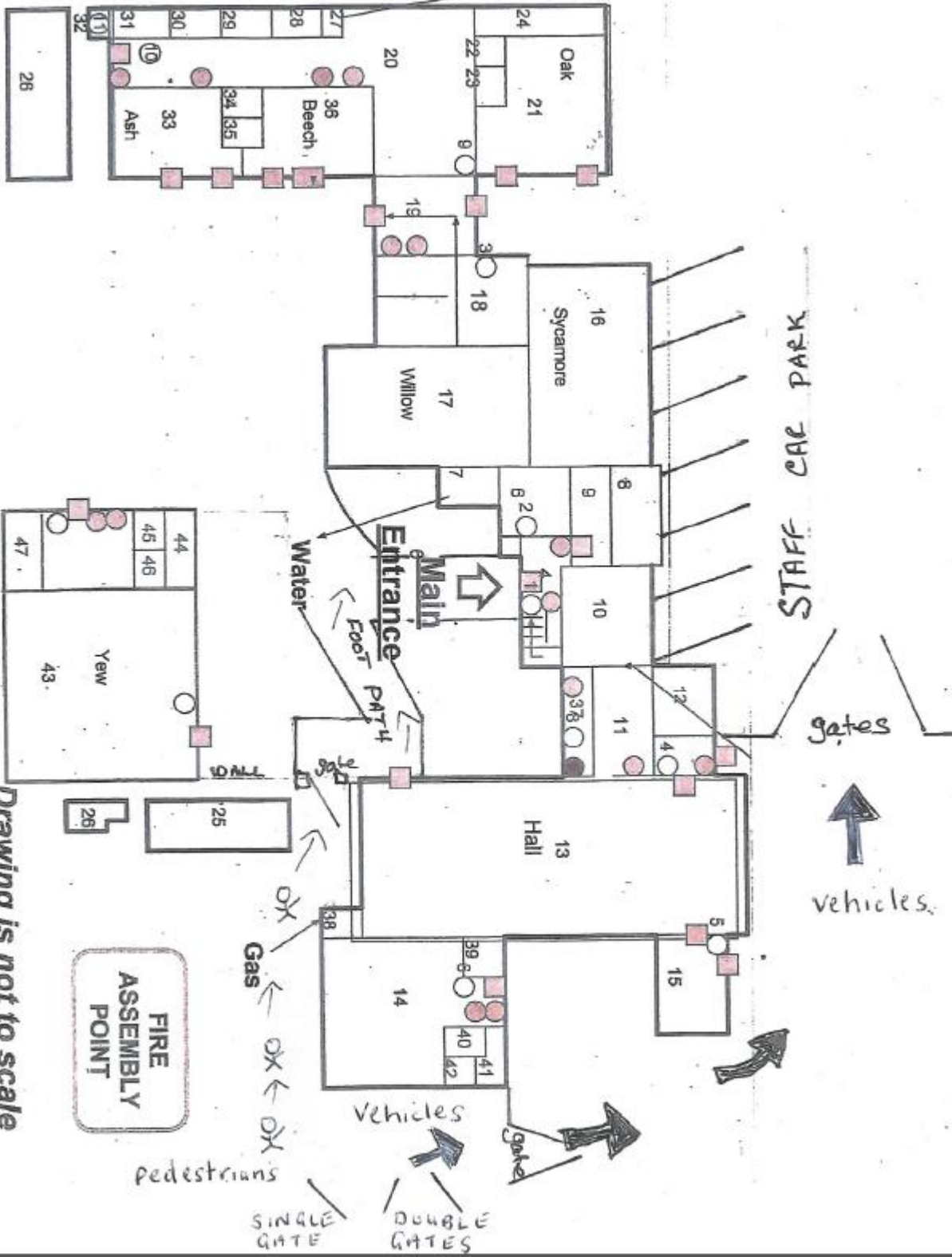
Pedestrian footways should be clearly marked – We will look into signage in due course.

Local Residents

Local residents should be discouraged from parking close to the school gates making it difficult for staff cars when entering and exiting the premises. Blocking the school gates could prevent emergency vehicles such as fire engines and ambulances from getting on to the school site.

The school will inform residents in School Road of events such as the fete which may result in increased levels of traffic.

The Resources Committee will monitor the implementation of the school`s traffic management plan.



Drawing is not to scale